

Replacement of filter cartridges

Replacement cartridges should be checked periodically, e.g. every 1-2 months. In case you are unfamiliar with the installation of the device, please contact your service technician or retailer.

The frequency of replacement of the filter elements depends on the water quality in your area. To ensure maximum performance from your installation, please follow this Operation and Maintenance Manual.

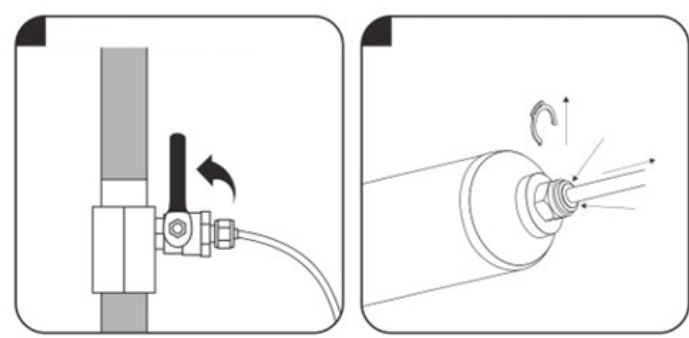
The frequency of replacing filter cartridges depends on the amount of water used and the concentration of chlorine in it. Recommended cartridge replacement frequency every 6 months on tap water. Membrane replacement approximately every 3-5 years. If the water is more polluted, replace the cartridges more often if necessary. Use only original cartridges.



ATTENTION: Using the device without regular replacement of filter cartridges may lead to its destruction and, consequently, the need to replace it. Only **WaterCell™** original cartridges are recommended.

Downtime: The system can be easily disconnected for extended periods of time. If the system is going to be shut down for more than 6 weeks, we recommend replacing the cartridges and membrane with new ones when restarting and then flushing the system for approx. 5 - 10 minutes. We also recommend flushing the system after short downtimes.

Storage: The system should always be stored above 0°C. Do not store the system where it may freeze. Frost will destroy the membrane.



1/. Close the water supply to the system by closing the shut-off valve or the cold water supply. Close the water tank valve.

2/. Open the clean water tap or 3-way faucet to reduce the water pressure. Wait 2-3 minutes for the system pressure to drop.

3/. To replace the pre-cartridges, unscrew the bodies at the bottom of the filter. Then replace the used cartridges with new ones. Remember to remove the protective film before installing new cartridges. Tighten the bodies until they stop.

4/. To replace the in-line cartridge after the membrane, disconnect the cartridge from the tubing: remove the blue safety clip. Disconnect the hose: press the white ring on the connector, which will loosen the connection. Now you can pull out the hose.

5/. Replace used cartridges with new ones. When using cartridges with a threaded connection, additionally put a straight pipe to connect the hose to the new cartridges. Use teflon tape to seal the connection.

6/. Connect the tubing to the new cartridge. To connect the hose to the fitting: Push the hose into the fitting as far as it will go. The collet (gripper) is equipped with stainless steel teeth that securely hold the hose in place. Attach the blue clip to secure the connection. Check the tightness of the connection.

7/. Turn on the water supply slowly, checking the tightness of the connection.

Membrane replacement



Mounting direction of the osmotic membrane

1. Close the water supply
2. Unscrew the housing body
3. Remove the used diaphragm
3. Remove the protective film from the new membrane
4. Place the new diaphragm into the housing opening in the direction shown in the figure
5. Put the housing body in place. Tighten by hand until it stops. Check the tightness of the connection.
6. Turn on the water supply

Your Dealer:

Neue Lebensqualität, www.nlg24.de
[Hauptstr. 1 in 23619 Badendorf, Tel. 04514891143](http://Hauptstr.1in23619Badendorf.Tel.04514891143)